

# Chemical dispenser

with access control HDT

**The HDT is an automatic dispenser / dosing unit and reduces risks when entering production areas. When the hands are inserted into the cylinders, sensors activate the atomisation of the disinfectant or soap. After that, the turnstile is released to allow the employee to pass through. The HDT is meant to be placed on a flat surface.**

## Options and/or accessories

*The HDT is optionally available with rail support (fencing).*

## Your benefits

- Release time of turnstile easy to set
- Chemical level indicator
- Chemical dosing on top and bottom of hands
- Adjustable blocking or release of turnstile
- Hygienic construction and surface finish



*HACCP International certified products.*



*Various settings on these products can be adjusted.*



*HDT-L*

## Versions:

HDT-R/L\*

Article number (R): 83201050

Article number (L): 83201060

*\* right or left version*

# Case study

## and technical information



*The HDT-L in practice.*

<b>Type</b>	<b>HDT-R/L</b>
Width / mm	1455
Depth / mm	791
Height / mm	1207 (from floor)
Voltage / V	230
Number of phases	1
Frequency / Hz	50
Power / kW	0.1
Drain	DN10
Weight / kg	65
Dosing of hand disinfectant / sec	0.03 - 1
Turnstile release time / sec	0 - 4.5

# Chemical dispenser

with access control HDT-WM

**The HDT-WM is an automatic dispenser / dosing unit and reduces risks when entering production areas. When the hands are inserted into the cylinders, sensors activate the atomisation of the disinfectant or soap. After that, the turnstile is released to allow the employee to pass through. The HDT-WM is to be mounted to the wall and is suitable for disinfectant and soap.**

## Options and/or accessories

*The HDT-WM can be optionally equipped with a sturdy floor mounting frame. Optionally available with rail support (fencing).*

## Your benefits

- Chemical level indicator
- Chemical dosing on top and bottom of hands
- Hygienic construction and surface finish
- Chemical dosing easy to adjust



*HACCP International certified products.*



*Various settings on these products can be adjusted.*



HDT-WM-R

## Versions:

- ▶ HDT-WM-R/ L\*  
Article number (R): 83201000  
Article number (L): 83201010
- ▶ HD-WM  
Hand disinfection  
No turnstile  
Article number: 83201020
- ▶ T-WM-R/L\*  
Turnstile  
No hand disinfection  
Article number: 83201040
- ▶ Floor mounting frame  
Suitable for HDT-WM,  
HD-WM and T-WM  
Article number: 83201070

*\* right or left version*

# Other designs

## and technical information

---



The HD-WM (left) and the T-WM-R placed on the optional floor mounting frame (right).

Type	HDT-WM-R/L	HD-WM	T-WM-R/L
Width / mm	890	721	890
Depth / mm	817	339	339
Height / mm	1229	767	1229
Voltage / V	230	230	230
Number of phases	1	1	1
Frequency / Hz	50	50	50
Power / kW	0.1	0.1	0.1
Drain	DN10	DN10	DN10
Weight / kg	50	35	45
Dosing of hand disinfectant / sec	0.03 - 1	0.03 - 1	-
Turnstile release time / sec	0 - 4.5	-	0 - 4.5

# Sole cleaner

DZW

**Thanks to the low step, the DZW is ergonomical to use.**

**The brushes are automatically humidified and activated by means of sensors. This ensures that energy consumption remains low. The splash protection prevents the space around the DZW becoming wet due to splashes of cleaning water.**

## Options and/or accessories

*The DZW is also available as built-in model and with double rail support. Can be optionally connected to a centralised chemical supply.*

## Your benefits

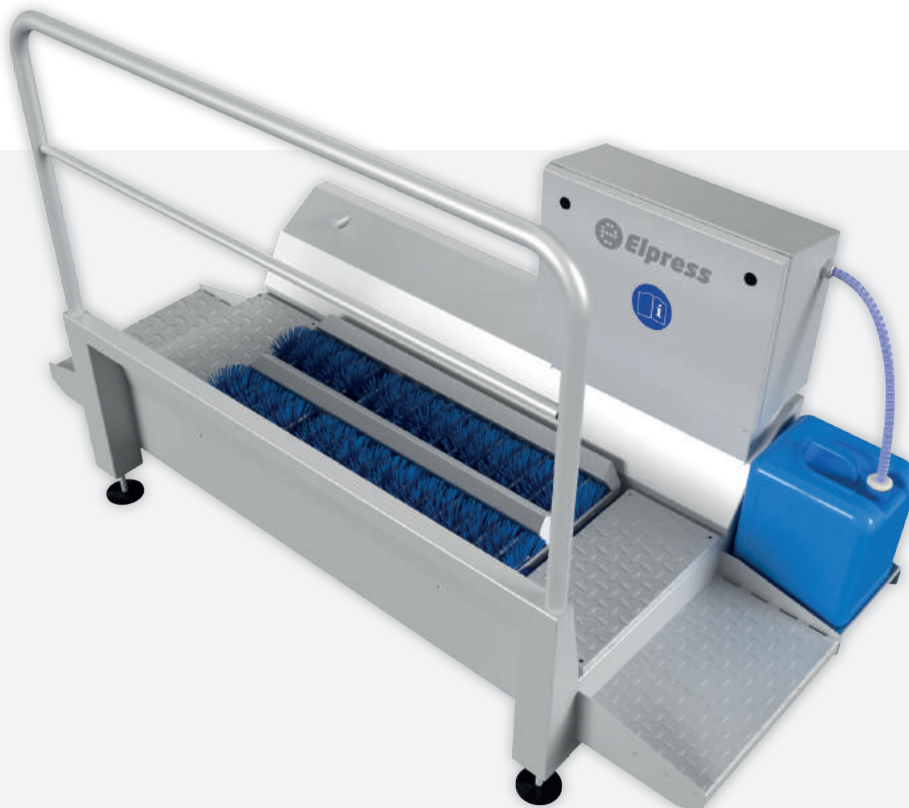
- Runtime of brushes can be set
- Sensor-controlled chemical dosing
- Brushes can be removed without tools
- Splash protection
- Hygienic construction and surface finish



*HACCP International certified products.*



*Various settings on these products can be adjusted.*



*DZW-1000-R*

## Versions:

- ▶ DZW-1000-R/L\*  
Article number (R): 83202200  
Article number (L): 83202220
- ▶ DZW-1500-R/L\*  
Article number (R): 83202240  
Article number (L): 83202260

*\* right or left version*

# Case study

## and technical information



*The DZW-1500-R, built in as part of a complete hygienic room.*

<b>Type</b>	<b>DZW-1000-R/L</b>	<b>DZW-1500-R/L</b>
Width / mm	890	890
Height / mm	1286 (from floor)	1286 (from floor)
Length / mm	2125	2640
Width of built-in model / mm	948	948
Height of built-in model / mm	1020 (from floor)	1020 (from floor)
Length of built-in model / mm	1919	2434
Brush length / mm	1000	1500
Height of step / mm	123	123
Voltage / V	400	400
Number of phases	3	3
Frequency / Hz	50	50
Power / kW	1	1
Water connection in	3/4"	3/4"
Water connection out	DN40	DN40
Weight / kg	185	205
Water consumpt. brushes / ltr / min	2.4	3.5

# Hygienic entrance

with sole cleaner DZW-HDT

**The DZW-HDT does two things at once: it cleans the soles and disinfects the hands. The rotating brushes are automatically humidified and activated by means of sensors. The hand disinfection is regulated by sensors. Spray nozzles above and underneath the hand ensure good dispersal of the disinfectant. After the hands have been disinfected, the turnstile is released and the user can proceed to the next room.**

## Options and/or accessories

*The DZW-HDT is also available as a built-in model and can be connected to a time registration system. Can be optionally connected to a centralised chemical supply.*

## Your benefits

- Runtime of brushes can be set
- Chemical dosing on top and bottom of hands
- Brushes can be removed without tools
- Release time of turnstile easy to set
- Hygienic construction and surface finish



*HACCP International certified product.*



*Various settings on these products can be adjusted.*



DZW-HDT-1000-R

## Versions:

- ▶ DZW-HDT-500-R/L\*  
Article number (R): 83201980  
Article number (L): 83201990
- ▶ DZW-HDT-700-R/L\*  
Article number (R): 83202000  
Article number (L): 83202020
- ▶ DZW-HDT-1000-R/L\*  
Article number (R): 83202040  
Article number (L): 83202060
- ▶ DZW-HDT-1500-R/L\*  
Article number (R): 83202080  
Article number (L): 83202100

*\* right or left version*

# Other designs

## and technical information



*The DZW-HDT-500-R, specially designed for small rooms.*

Type	DZW-HDT-500-R/L	DZW-HDT-700-R/L	DZW-HDT-1000-R/L	DZW-HDT-1500-R/L
Width / mm	901	918	918	918
Height / mm	1846 (from floor)	1513 (from floor)	1513 (from floor)	1513 (from floor)
Length / mm	1493	1825	2125	2640
Width of built-in model / mm	908	948	948	948
Height of built-in model / mm	1590 (from floor)	1247 (from floor)	1247 (from floor)	1247 (from floor)
Length of built-in model / mm	973	1745	1919	2434
Brush length / mm	500	700	1000	1500
Height of step / mm	123	123	123	123
Voltage / V	400	400	400	400
Number of phases	3	3	3	3
Frequency / Hz	50	50	50	50
Power / kW	1	1	1	1
Water connection in	3/4"	3/4"	3/4"	3/4"
Water connection out	DN40	DN40	DN40	DN40
Weight / kg	175	215	225	260
Water consumpt. brushes / ltr / min	1.5	1.6	2.4	3.5
Dosing of hand disinfectant / sec	0.03 - 1	0.03 - 1	0.03 - 1	0.03 - 1
Turnstile release time / sec	0 - 4.5	0 - 4.5	0 - 4.5	0 - 4.5



# Hygienic entrance

with sole and shaft cleaner DZW-HDT-EDSW

**The DZW-HDT-EDSW is a hygienic entrance which cleans the soles and disinfects the hands at the same time. This means your personnel can proceed quickly and efficiently through the cleaning process. When making optional use of the shaft cleaner, the edges and the boots' shafts are thoroughly cleaned. The turnstile is released only after use of the hand disinfection feature, which atomises the soap or disinfectant by means of sensors.**

## Options and/or accessories

*Also available as a built-in model and/or with time registration.  
Can be optionally connected to a centralised chemical supply.*

## Your benefits

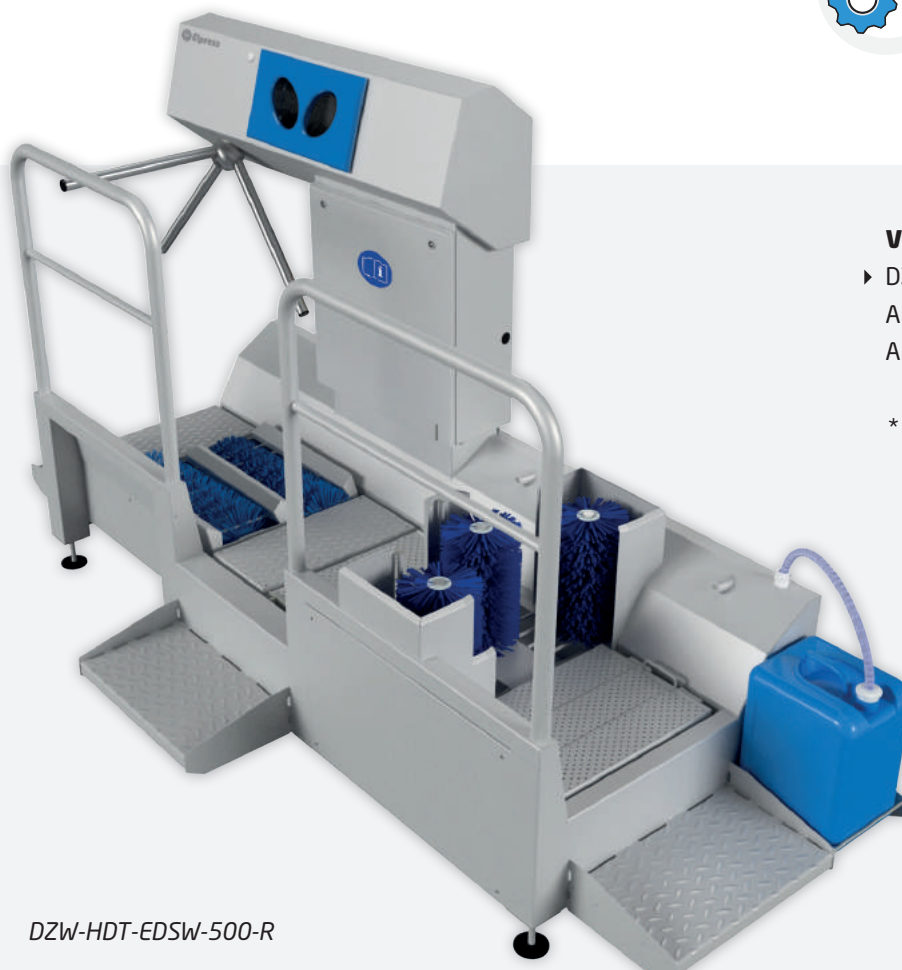
- Runtime of brushes can be set
- Chemical dosing on top and bottom of hands
- Brushes can be removed without tools
- Release time of turnstile easy to set
- Hygienic construction and surface finish



*HACCP International certified products.*



*Various settings on these products can be adjusted.*



*DZW-HDT-EDSW-500-R*

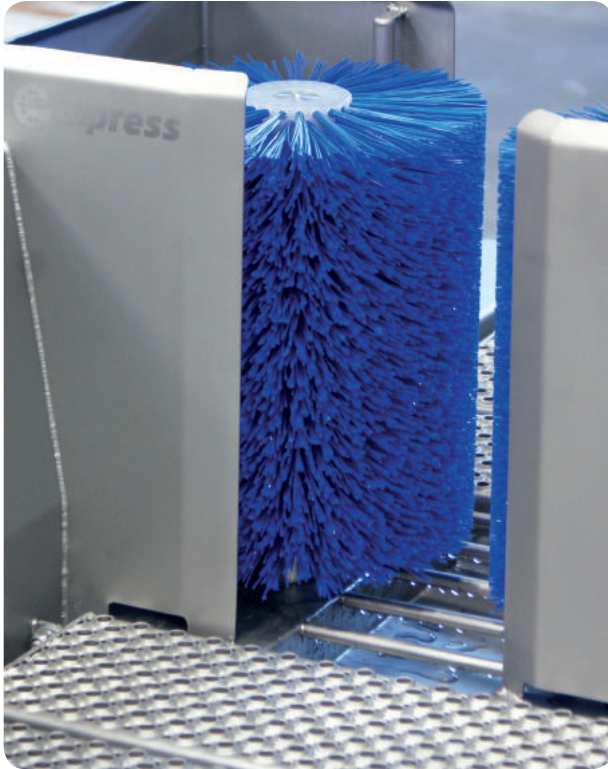
## Versions:

- ▶ DZW-HDT-EDSW-500-R/L\*
- Article number (R): 83202019
- Article number (L): 83202017

*\* right or left version*

# Case study

## and technical information



*The DZW-HDT-EDSW-500-L in practice.*

Type	DZW-HDT-EDSW-500-R/L
Width / mm	1198
Height / mm	1513 (from floor)
Length / mm	2757
Width of built-in model / mm	908
Height of built-in model / mm	1247 (from floor)
Length of built-in model / mm	2207
Brush length / mm	500
Height of step / mm	123
Voltage / V	400
Number of phases	3
Frequency / Hz	50
Power / kW	2
Water connection in	3/4"
Water connection out	DN40
Weight / kg	175
Water consumpt. brushes / l / min	2,2
Dosing of hand disinfectant / sec	0.03 - 1
Turnstile release time / sec	0 - 4.5

# Sole disinfection

## DZD

**The DZD disinfects soles by means of a disinfection bath. The bath is automatically topped up with disinfectant. This means the systems never fails, and the excessive use of disinfectant is prevented. You can decide for yourself which disinfectants you want to use. The splash guard prevents splashing disinfectant from landing outside the DZD. The floors and walls around the DZD remain clean and dry. After twenty-five passings, the bath is automatically refreshed.**

### Options and/or accessories

*The DZD is also available as a built-in model and with double rail support. Can be optionally connected to a centralised chemical supply.*

### Your benefits

- Automatic refreshing of the disinfectant bath
- Refresh time of the disinfection bath easy to set
- Hygienic construction and surface finish
- Fitted with a drain zone
- Chemical level indicator



*HACCP International certified products.*



*Various settings on these products can be adjusted.*



DZD-1000-R

### Versions:

- ▶ DZD-1000-R/L\*  
Article number (R): 83203100  
Article number (L): 83203120
- ▶ DZD-1500-R/L\*  
Article number (R): 83203140  
Article number (L): 83203160

*\* right or left version*

# Case study

and technical information



*The DZD in practice.*

<b>Type</b>	<b>DZD-1000-R/L</b>	<b>DZD-1500-R/L</b>
Width / mm	901	901
Height / mm	1180 (from floor)	1180 (from floor)
Length / mm	1820	2335
Width of built-in model / mm	948	948
Height of built-in model / mm	1020 (from floor)	1020 (from floor)
Length of built-in model / mm	1919	2434
Capacity of disinfection bath / ltr	34	37
Height of step / mm	200	200
Voltage / V	230	230
Number of phases	1	1
Frequency / Hz	50	50
Power / kW	0.1	0.1
Water connection in	3/4"	3/4"
Water connection out	DN40	DN40
Weight / kg	100	115
Refresh cycles disinf. bath	25 passings	25 passings
Refresh duration disinf. bath / sec	6 - 60	6 - 60

# Hygienic entrance

with sole disinfection DZD-HDT

**The DZD-HDT is time-efficient, because disinfecting of the soles and hands takes place simultaneously. As the disinfection bath is refreshed automatically, the unit has no down-time and is economical in the use of chemicals. After the hands are disinfected, the employee can proceed to the next room. You are therefore assured of controlled access at all times. The splash protection catches any splashes of disinfectant. This keeps the room around the DZD-HDT clean and dry.**

## Options and/or accessories

*The DZD-HDT is also available a built-in model. Can be optionally connected to a centralised chemical supply.*

## Your benefits

- Automatic refreshing of the disinfectant bath
- Chemical dosing on top and bottom of hands
- Refresh time of the disinfection bath easy to set
- Release time of turnstile easy to set
- Hygienic construction and surface finish



*HACCP International certified products.*



*Various settings on these products can be adjusted.*



*DZD-HDT-1000-R*

## Versions:

- ▶ DZD-HDT-500-R/L\*  
Article number (R): 83203080  
Article number (L): 83203090
- ▶ DZD-HDT-1000-R/L\*  
Article number (R): 83203000  
Article number (L): 83203020
- ▶ DZD-HDT-1500-R/L\*  
Article number (R): 83203040  
Article number (L): 83203060

*\* right or left version*

# Case study

## and technical information



*The DZD-HDT-1000-R, built-in and connected to a centralised chemical supply.*

Type	DZD-HDT-500-R/L	DZD-HDT-1000-R/L	DZD-HDT-1500-R/L
Width / mm	906	918	918
Height / mm	1846 (from floor)	1407 (from floor)	1407 (from floor)
Length / mm	1195	1820	2335
Width of built-in model / mm	908	948	948
Height of built-in model / mm	1590 (from floor)	1247 (from floor)	1247 (from floor)
Length of built-in model / mm	973	1919	2434
Capacity of disinfection bath / ltr	26	34	37
Height of step / mm	200	200	200
Voltage / V	230	230	230
Number of phases	1	1	1
Frequency / Hz	50	50	50
Power / kW	0.5	0.5	0.5
Water connection in	3/4"	3/4"	3/4"
Water connection out	DN40	DN40	DN40
Weight / kg	130	150	170
Dosing of hand disinfectant / sec	0.03 - 1	0.03 - 1	0.03 - 1
Turnstile release time / sec	0 - 4.5	0 - 4.5	0 - 4.5
Refresh cycles disinf. bath	25 passings	25 passings	25 passings
Refresh duration disinf. bath / sec	6 - 60	6 - 60	6 - 60